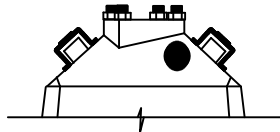
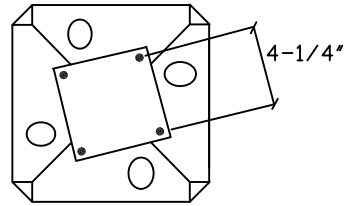


DP-75E 4B

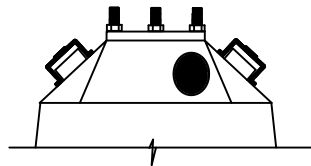


1/2" Diam Bolts @ 4 -1/4" OC
Bolt height 1"

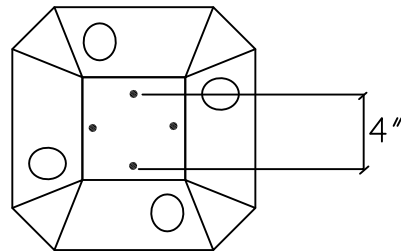


Plinth size - 5-5/8" Sq
Rotation -19 degrees CCW

DP-100E 4B

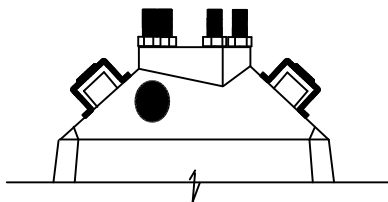


5/8" Diam Bolts @ 4" OC - N/S, E/W
Bolt height 2 -3/8"

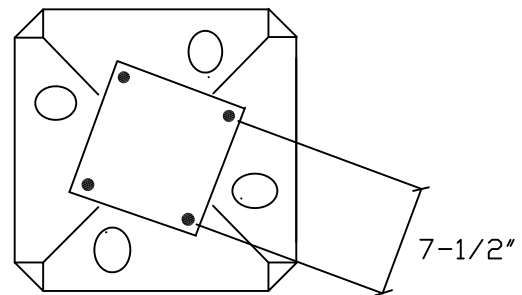


Plinth size - 5-3/8" Sq
Rotation - Orthogonal

DP-200E 4B



3/4" Diam Bolts @ 7-1/2" OC
Bolt height 3-1/8"



Plinth size - 9" Sq
Rotation -19 degrees CW

US PAT. #5039256, #6578333 & #7326003

COPYRIGHT: ©2011
ALL DETAILS IN WHOLE, OR IN PART,
OR ANY PORTION THEREOF ARE COPYRIGHTED
BY PIN FOUNDATIONS, INC. AND MAY BE USED
BY THE RECIPIENT OR THEIR ASSIGNS FOR
PROJECT APPLICATIONS ONLY.

PIN FOUNDATIONS, INC.

GIG HARBOR, WASHINGTON
(253) 858-8809